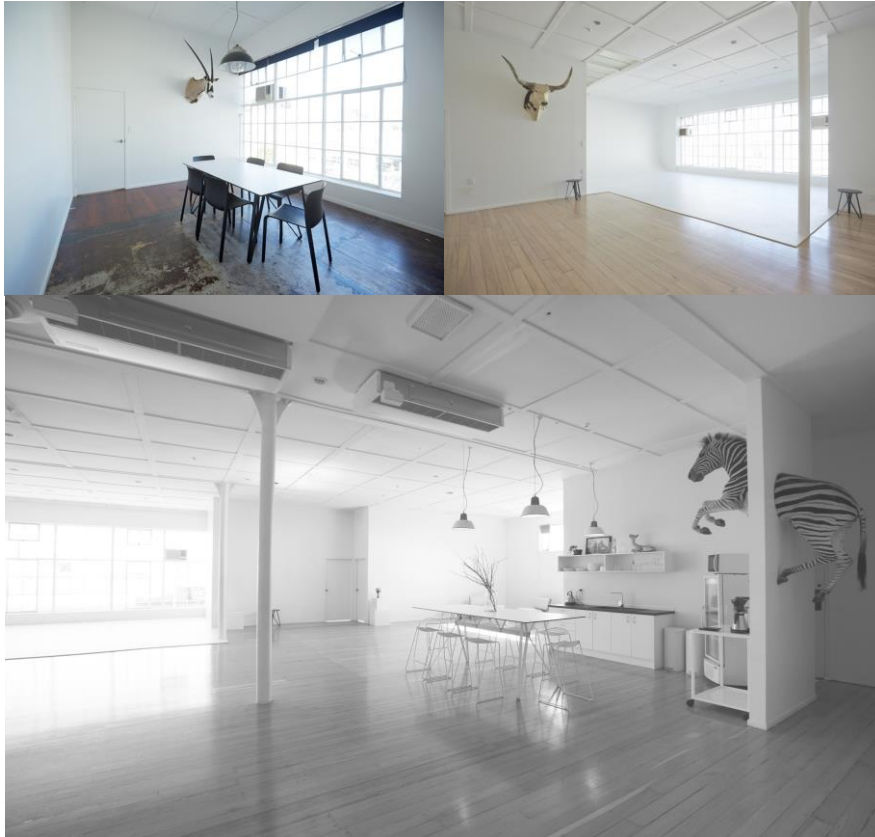




Thievery Studios

203 Karangahape Road, Auckland City, 1010



VENUE INFO

Located in the vibrant area of K Rd Auckland New Zealand. Easily accessible via motorways and surrounded by Auckland's best Cafe's and Restaurants.

All prices are NZD + gst and assume you have public liability insurance.

All prices include wireless internet, basic power & heating. Studios are single phase power.

RATES

STUDIO 1 (50-100)
Full Day (8 Hours) \$1500
Half day (4 Hours) \$950
Extra Hours \$200

STUDIO 1 (100-150)
Full Day (8 Hours) \$2000
Half day (4 Hours) \$1200
Extra Hours \$200

STUDIO 2
Full Day (8 Hours) \$700
Half day (4 Hours) \$450
Extra Hours \$100

Hours:

Monday - Friday 8am - 6pm
Weekends and Public Holidays
- By Appointment

CONTACT

info@littlewolf.co.nz

09 571 0157